



LINK

---

FABRICS



## DESIGNED FOR MODERN LIVING

In 2010, Link partnered with designers Doug & Gene Meyer and fabric manufacturer Sunbrella to introduce its first outdoor fabric and trim collection. Doug & Gene designed a collection of bright, bold, large scale patterns and stripes that became an instant hit within the design community, many of which can be found in both homes and luxury resorts around the world.

In 2021, Link partnered with Jennifer Welch to introduce the Souk Collection. An avid traveler, Jennifer Welch's Souk Collection draws inspiration from a trip to Marrakesh, Morocco. The names of each fabric represent the region where these fabrics originate. Ikat themed fabrics have been in style for centuries and have an overarching reach to many aesthetics; from traditional, to transitional, to modern.

Discover Link Design Studio's expanded selection of luxury performance fabrics and trims in sophisticated novelty weaves and textures. All are custom designed to bring sophisticated style, durability and peace of mind whether they grace your indoor or outdoor environment.





THE  
LINEAGE  
COLLECTION







Designing brothers Doug and Gene Meyer reference an unparalleled historical vocabulary of design, art, fashion, and interiors in their collaborative practice. That knowledge allows them to apply specific styles where appropriate, reinterpret them for the zeitgeist of the time, and juxtapose them to marvelously unexpected effect. The Meyers now exercise their considerable talents once again to create the Lineage Collection for Link.

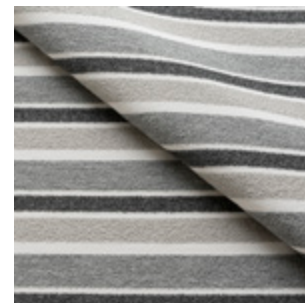
Doug, named by both Architectural Digest France and AD Germany as one of the top 100 designers in the world, straddles the domains of interior design and fine art. Gene, a two-time CFDA winner, hails from the world of fashion supplemented by myriad explorations into product design ranging from writing instruments to tabletop. Together they design rugs, fabric, wallpaper, lighting, furniture, and accessories for the home market. Collectively, their affiliations included luminaries such as Geoffrey Beene, Holly Solomon, MoMA, Acme Studios, Swid Powell, and Anne Klein.

Informed by decades of participation in home furnishings, the Meyers consistently intuit what works and doesn't work in the interior design world. An underlying principle to much of the duo's aesthetic is that patterns, textures, colors, and weaves of a collection should complement each other yet also work as versatile accompaniments to other fabric offerings.

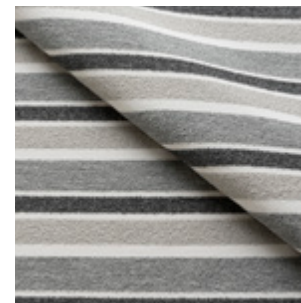




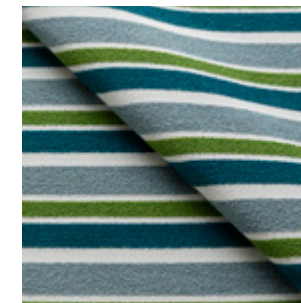
# BEACH COMBER



STERLING



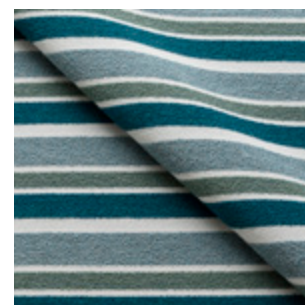
STEEL



TURQUOISE



SKY



TEAL



BLUE STEEL



# TATAMI



SUGAR



FLAX



STERLING

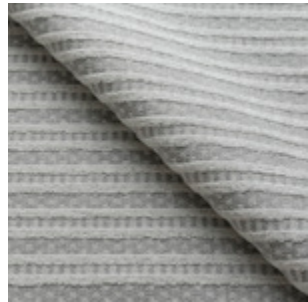
# MONTAGE



SUGAR



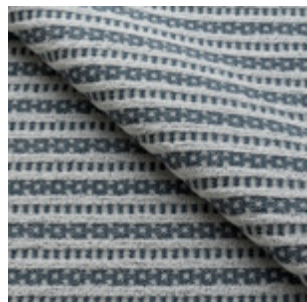
FLAX



STERLING



CARBON



COBALT







# REGATTA



SUGAR



DOVE



FLAX



STERLING



COBBLESTONE



SPA



SAGE



SPRING



SKY



COBALT



RAIN



# SERENITY



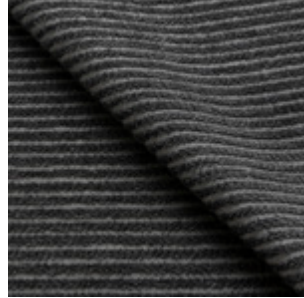
SUGAR



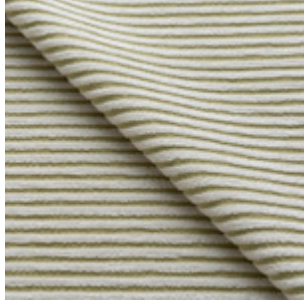
DOVE



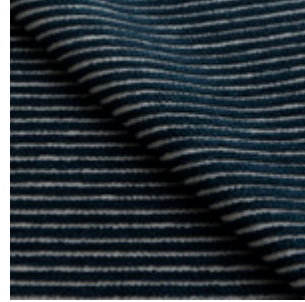
COBBLESTONE



STEEL



SAGE



COBALT



BLUE STEEL



DUSK BLUE



RAIN







# LIDO



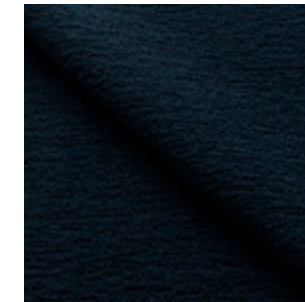
FLAX



STEEL

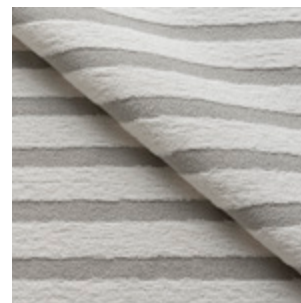


STERLING

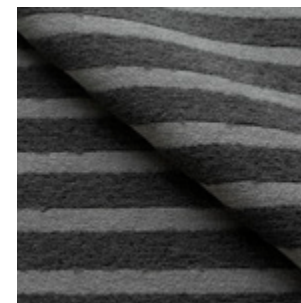


DUSK BLUE

# LIDO STRIPE



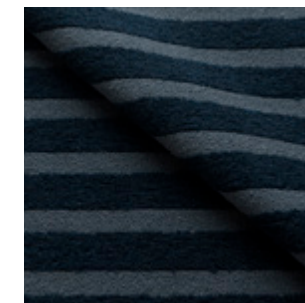
DOVE



STEEL



CARBON



DUSK BLUE



# THE SOUK COLLECTION

Jennifer Welch



"A large part of my business is specifying indoor / outdoor fabrics so designing a collection for LINK was a perfect collaboration. So many clients have children, pets, or just like to kickback and not worry about accidents that might happen from sloshing around a of glass wine, ha! Having furniture upholstered in fabrics that are not stain resistant leads to people feeling inhibited in their own homes and on edge when they have guests over. Using high quality, luxury performance fabrics allows the clients to live uninhibitedly - as it should be in your own home!"





# GIZA



PUTTY



NOIR



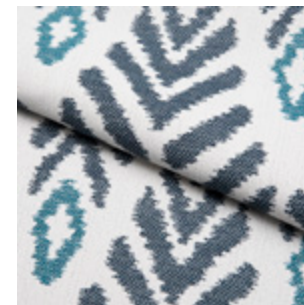
EMERALD



AUBERGINE



SLATE BLUE



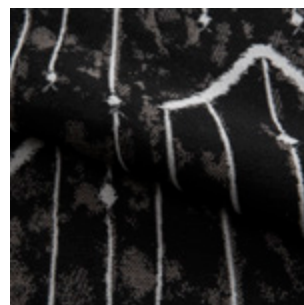
DUSK BLUE



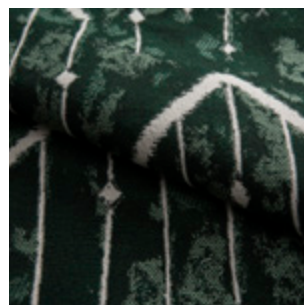
# MARRAKESH



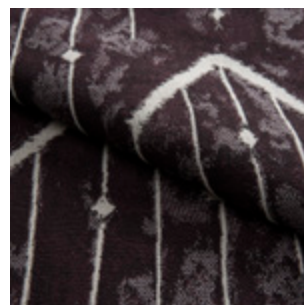
PUTTY



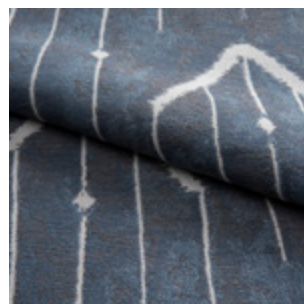
NOIR



EMERALD



AUBERGINE



SLATE BLUE



DUSK BLUE







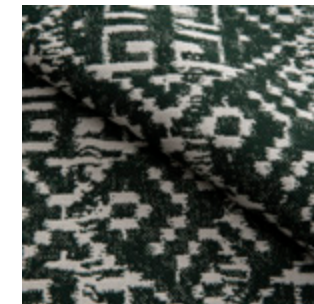
# ISTANBUL



PUTTY



NOIR



EMERALD



AUBERGINE



DUSK BLUE



# FEZ



PUTTY



NOIR



DUSK BLUE

# BAZAAR



PUTTY



NOIR



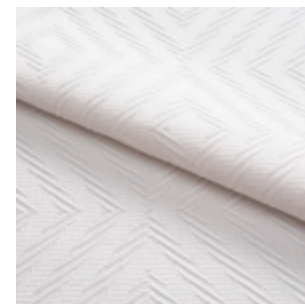
SLATE BLUE







# CAIRO



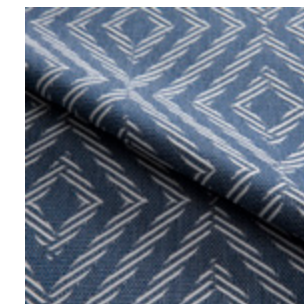
SUGAR



PUTTY

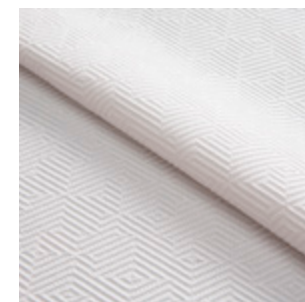


NOIR



DUSK BLUE

# LABYRINTH



SUGAR



SAND



PUTTY



DUSK BLUE



# PLAIN STRIPE



SAND



PUTTY



NOIR



DUSK BLUE







# LINK DESIGN STUDIO

Link partners with industry leaders such as Sunbrella to ensure that the fabrics are woven from yarns engineered to perform in the desert heat as well as saturated rain-forest climates without concern over mildew or fading.

Link Design Studio collaborates with mills that employ artisanal skilled weavers, blending old world manufacturing techniques with modern materials, to create our uniquely diverse textiles. Full of chic patterns, vibrant color-ways and complex weave structures that offer a soft plush touch; Link fabrics can be used in any environment that demands performance and enjoyment.





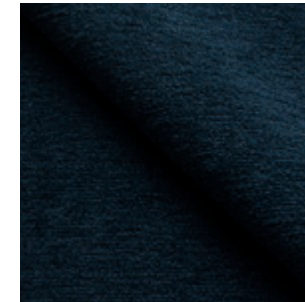
# SHASTA



SUGAR

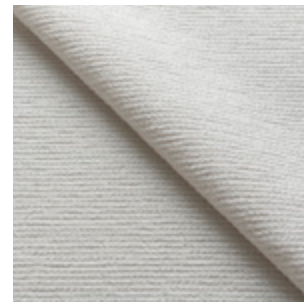


STERLING



COBALT

# TAOS



SUGAR



FLAX



STERLING



COBBLESTONE



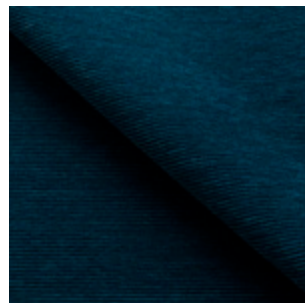
BLUE STEEL



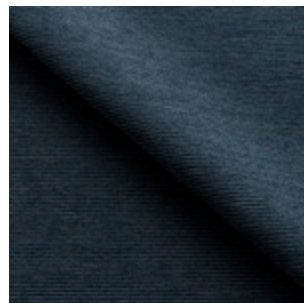
# CARMEL



DOVE



TEAL



BLUE STEEL



RAIN







# RICH TEXTURES



MONTAUK



NAPSACK



CARMEL



HORIZON



PASHMINA



TIDAL



HAMPTON



RITZ



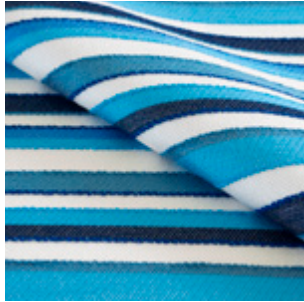
SERENGETI



DERBY



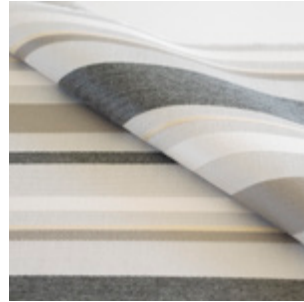
# BOLD STRIPES



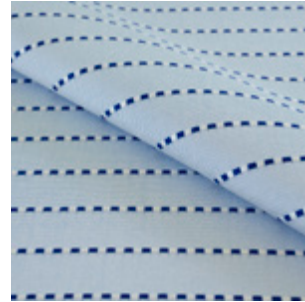
RIBBON STRIPE



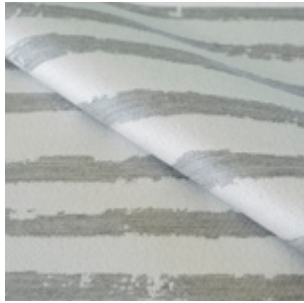
MORNING GLORY



SANTA BARBARA



PALMA



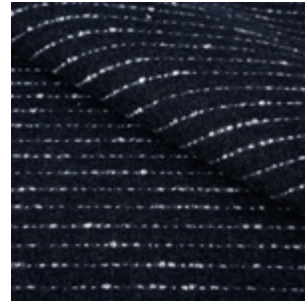
BRUSH STROKE



HAVANA STRIPE



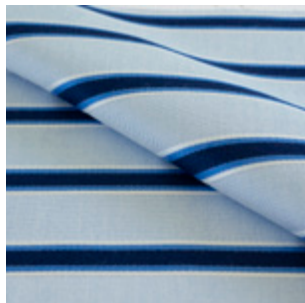
STITCH



PASHMINA STRIPE



KENNEDY TWEED



CAPRI







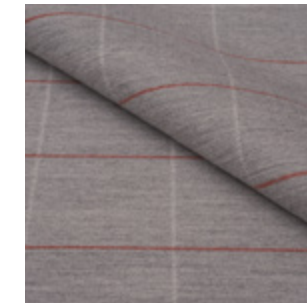
# CHIC PATTERNS



THATCH



WILSHIRE



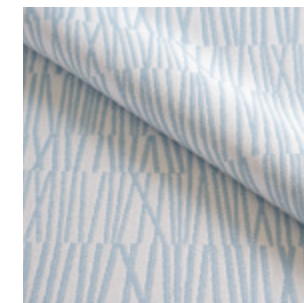
HUNTSMAN



BREAKER



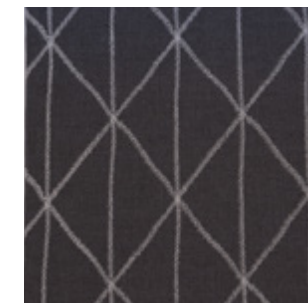
CRISS CROSS



MATCHSTICK



BLISS



SHIBORI STITCH



KENNEDY TWEED



FRINGE



# VIBRANT SOLIDS



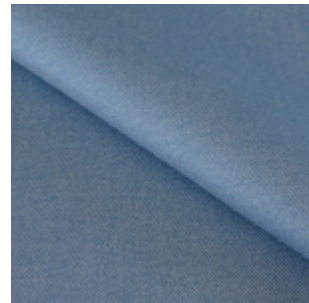
TUNDRA



MONTAUK



CANVAS



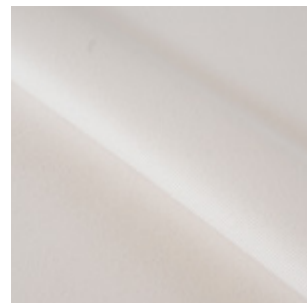
BROADMOOR



OXFORD CLOTH



ASPEN



TWILL



LINEN



WEATHERED



BARRACUDA





LINK

2007 N Royal Lane, Suite 100

Dallas, TX 75229

T (972) 385-7380 · F (214) 723-5680

[info@linkoutdoor.com](mailto:info@linkoutdoor.com)

[www.linkoutdoor.com](http://www.linkoutdoor.com)